

PHOTOS POUR LE WEB

Expert Maritime – Industriel - I.A.RD

MARINE SURVEYOR

Captain . Pierre BOTNEM NI HEK

MEMBRE DE L'UPEM (associé.)

Expert du CESAM - ex-Commissaire d'Avarie à Port-Gentil

Je suis sur un tanker UTHA pour l'expertise du guindeau dont l'ancre avait accroché les rochers et c'est perdu en mer par la suite.



Mobil +241 04 55 01 06 / +241 07 45 09 71 / +241 05 32 93 01

botnempierre@yahoo.fr

BP.1010 Libreville

BP 3327 Port-Gentil

September 2013 I went to GHANA and NIGERIA to carry out a condition Survey of two Tankers SEA TIGER & FULMAR on behalf of Gabonese factory for crude oil refining and Minister of Transport. They wanted to buy one of them according to my appreciation.

NIGERIA



GHANA



MARINE WARRANTY SURVEYOR
Cpt. Pierre BOTNEM NI HEK



In March 2013, PERENCO had a job to install a mega compressor for pumping gas from ESHIRA to Libreville. The insurers appointed me to carry out a warranty Survey mission. The contactor was ORTEC Marine

• **APPROVAL for CONTRACTOR's procedures for load-out of any part of the WORK: .**



APPROVAL for all installation activities;

Here they were installing the diesel motor and mega compressor



APPROVAL for all transportation;

CONVOYING from the camp of ESHIRA to the RIVER = 150KM

APPROVAL for all of CONTRACTOR's tugs, barges, towages and stowage arrangements in respect of all tows to the WORKSITE



Tug, barge, towages and stowage



APPROVAL for all of CONTRACTOR's procedures for offshore lifting and hoisting;

Hosting the Mega Compressor.



APPROVAL of the lay barge, associated anchor handling vessels and other construction vessels;

LAYING BARGE MAJOR

I wrote a report mentioning;

- Position, latitude, longitude
- Main wind, main courant...
- Condition of wire, certification.
Condition of winches...
- Barge characteristics....



Fore anchorage lines.

We have 02 anchors at starboard side; 1 & 2.



We have 02 anchors at portside: 3 & 4



STERN ANCHORAGE LINES. /

28/12/2008 General condition of stern anchorage line is good.

We have 02 anchors at starboard side; 5 & 6.



We have 02 anchors at portside: 7 & 8



Warranty, by way of written Certificates of APPROVAL, for all operations they are required to approve, **including engineering,**

SURVEY REPORT
DAMAGE ON GENERATOR DIESEL N° 3 (DG 3)
SUPPLY BOURBON HESTIA
25th January, 2008
POINTE-NOIRE CONGO



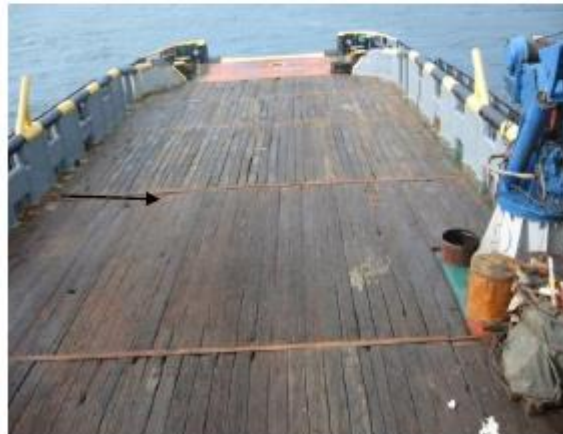
APPROVAL for all of **CONTRACTOR's** procedures for offshore lifting and hoisting;

APPROVAL for all of **CONTRACTOR's** tugs, barges, towages and stowage arrangements in respect of all tows to the **WORKSITE** and **HOSTING**.

2010 /09/ Tug boat **THE GUARDIAN** alongside the Barge **DLG HERCULES** before beginning of loading, lashing and securing Diving Equipment on deck.



After taking the Equipment dimensions, The Master of the tug boat, Me warranty surveyor Cpt Pierre BOTNEM and the Diving Superintendent of **DLG HERCULES** planed how to load the twelve equipments on the deck of the tug boat.



APPROVAL for all of
CONTRACTOR's procedures for
offshore lifting and hoisting;

HOSTING the components.

